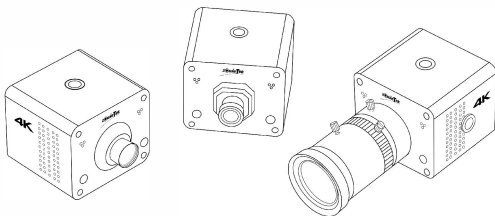




# Quick Start Guide

---

## 4K POV Camera



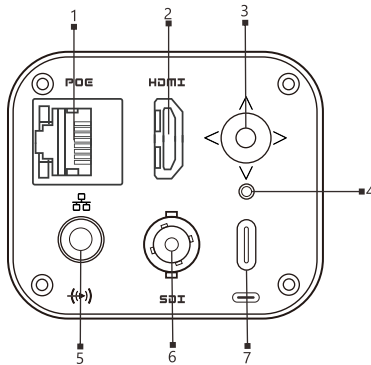
**NDI** is a registered trademark of the Vizrt Group

It is recommended that you read this product's instruction manual carefully before using it. To avoid physical or electrical damage to your personal safety and the equipment, please install and use this product in strict accordance with this manual or the instructions of a professional. Incorrect electrical connections or physical installation may cause permanent damage to the equipment or even threaten your personal safety.

# 1. Packing List

Item	Unit	Quantity
4K POV Camera	PCS	1
Power Adapter	PCS	1
Quick Start Guide	PCS	1
Hot Shoe Mount Adapter to 1/4" -20 UNC Thread Hole	PCS	1
C to CS Mount (CS Only)	PCS	1

# 2. Device Interface Description

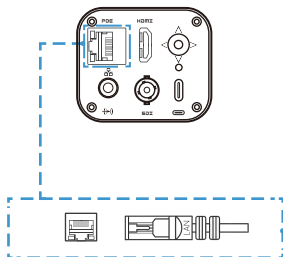


1	LAN/PoE+/NDI® HX3	5	3.5mm Audio Inputs
2	HDMI Output	6	SDI Output
3	4-Direction Center Push Menu Button	7	USB-C Power Input
4	Power Indicator Light		

### 3. Installation and connection

#### 1) Connect Network

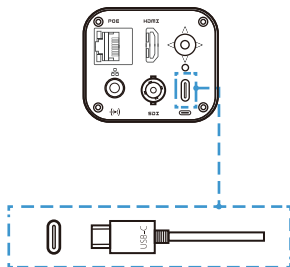
Connect the ZowieCam to a network router or with DHCP functionality using an Ethernet cable.



#### 2) Power Connection

##### Option 1: USB-C Power

After powering the ZowieCam with the power adapter, the status indicator light will illuminate.



##### Option 2: PoE Power

The ZowieCam can also be powered through Ethernet (PoE/PoE+), eliminating the need for a power adapter. When using PoE, connect the Ethernet cable to a PoE Network Switch; the cable should be at least a CAT5e ethernet cable.

### 3) Camera Lens

All ZowieCams are equipped with a 4K 8-megapixel distortion-free M12 lens and fine tuned at 1M distance in factory. CS mount mode uses CS to M12 adapter to install the M12 lens.

Lens parameters:

F: 2.2, Focal length: 7.2mm

FOV(D/H/V):

D: 48.3°

H: 42.6°

V: 24.6°

For CS/M 12 mount camera, the lens focus can only be adjusted manual by physically rotating the lens. When you face the front of the camera, rotate the lens clockwise to focus far and counter-clockwise to focus near.

### 4) Network Control of the Camera

The ZowieCam offers four convenient and quick methods to access the web-based control interface.

#### (1) Login to ZowieCam via mDNS

Please enter <http://ZowieCam-xxxxx.local> in your computer or mobile phone browser

#### 4K POV Camera

Model: ZowieCAM P/N: 30631-101

Input: USB TYPE-C 12W

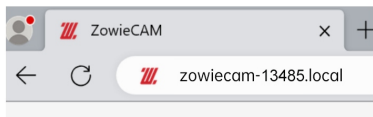


URL: <http://zowiecam-13485.local>

Fail-safe IP Addr: 192.168.5.168

User Name: admin Password: admin

MADE IN CHINA

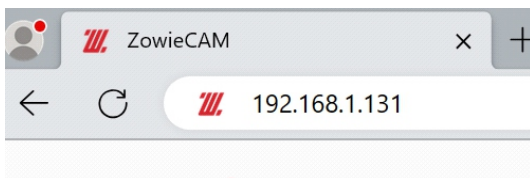


#### Notes:

The label locates at the bottom of ZowieCAM, and the URL address can be found in the label. It is best to take a photo of the label and save it so that you can quickly find URL the next time.

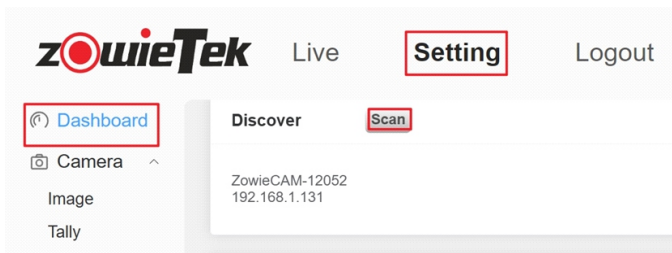
## (2) IP Address

ZowieCam's DHCP is on by default. Please connect the HDMI/SDI output to the monitor, the IP address will be automatically displayed at the upper left corner at anytime after ZowieCam is turned on; or press the MENU button to call out the OSD menu instantly to check the IP address. Input the IP address In the browser of mobile phones or computers in the same LAN to login the web control interface.



## (3) Login to ZowieCam by Device Discover

If you already have ZowieCam or ZowieBox, you can also login to the new ZowieCam by device discover, log into the web control page, and click "Setting->Dashboard" to use the discovery function. After clicking "Scan", find the serial number of the device that matches with the new ZowieCam label and click it to the web control interface of the device.



#### (4) Fail-Safe IP

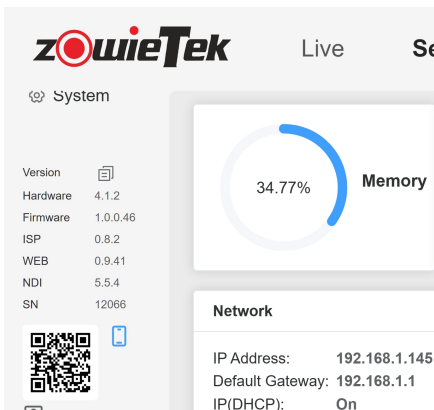
When the connected network does not have DHCP function, when ZowieCam is directly connected to the computer via a network cable, or other unknown errors occur, the IP of ZowieCam will change to a fail-safe IP (192.168.5.168). To access the web-based control interface, you need to add the 192.168.5.x network segment on your computer.

#### Notes:

Username: admin; Password: admin

#### (5) Control From Your Pad or Phone

If users need to use mobile phone to log in the web control interface after logging in the web control interface on the computer side, please make sure that the mobile phone and ZowieCam are in the same LAN, and scan the QR code at the bottom left corner of the web page to log in the web control interface.

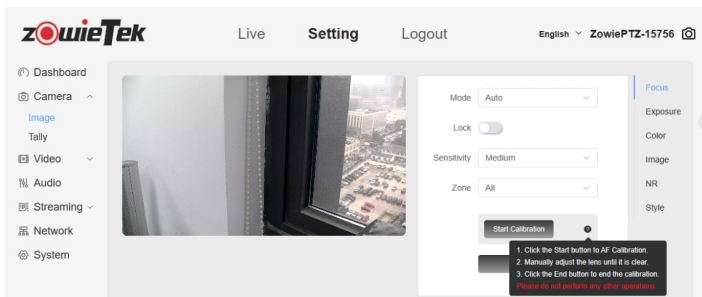


## Notes:

AF mode camera is fine tuned focus at 1 meter object distance at factory. If your use distance is not 1 meter, or you install a new M12 lens for the first time, you need to focus manually and then calibrate it.

1) Log in to the ZowieCAM web page

2) Click 'Setting→Camera→Image→Start Calibration', then manually twist the focus ring until it is completely sharp (clockwise is to focus far and counterclockwise is to focus near).



3) Then click 'End Calibration' on the web page.

## 4. MENU Control of Camera

The ZowieCam button is a four directional buttons with a center and four directions: up, down, left, right, and it locates at the back panel.

1) OSD Menu Controls

Press the center button to access or return to the OSD menu.

When the OSD menu is active, use the up and down directional button to navigate; use the left and right directional button to enter submenus or adjust numerical values.

## 2) Standby

Press and hold the button in the center direction for 3 seconds to toggle ZowieCam between standby mode and normal operation.

## 3) Shortcut Buttons

When the OSD menu is inactive, use the up, down, left, and right buttons to modify parameters .

The shortcut buttons are related to the device model, exposure mode and focus mode. The corresponding table is as follows.

CS/M12 Shortcut Button Definition		
Exposure Mode	Up(+)Down(-)	Left(+)Right(-)
Auto Mode	Gain Limit	EV
Manual Mode	Gain	Shutter Speed
Shutter Priority Mode	Gain Limit	Shutter Speed

### Tip:

If the model number written on the bottom of ZowieCam is 30631-002 or 30621-012, i.e., ZowieCam has the AF function, the button function will be modified according to the focus mode and the exposure mode, and the specific parameters are shown below;

AF Shortcut Button Definition			
Exposure Mode	Focus Mode	Up(+)Down (-)	Left(+)Right(-)
Auto Mode	Auto/One Push	Gain Limit	EV
	Manual	Focus Far/Near	EV
Manual Mode	Auto/One Push	Gain	Shutter Speed
	Manual	Focus Far/Near	Shutter Speed
Shutter Priority Mode	Auto/One Push	Gain Limit	Shutter Speed
	Manual	Focus Far/Near	Shutter Speed



## 5. Front Panel Indicator Lights

The front panel lights of the ZowieCam serve as status indicator lights during startup, with specific rules as follows:

Color	Description
Right Side Yellow Light	Lens self-check in progress
Left Side Red Light	Powering On

After ZowieCam completes its startup, the front panel lights will function as Tally lights. When the Tally light is set to automatic mode and the encoding mode is NDI, if the NDI-encoded output is sent to other NDI receivers (such as vMix, OBS, etc.), ZowieCam will modify the Tally light color based on whether the receiver switches to Program (PGM) or Preview (PVM) mode.

Color	Description
Red	PGM
Green	PVM

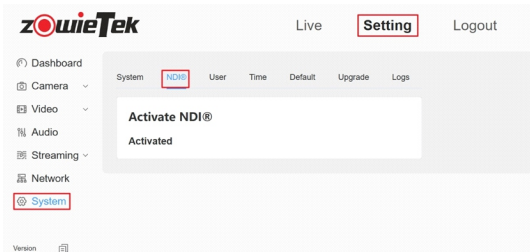
## 6. Encoding Mode

### 1) Encoding Mode Switching

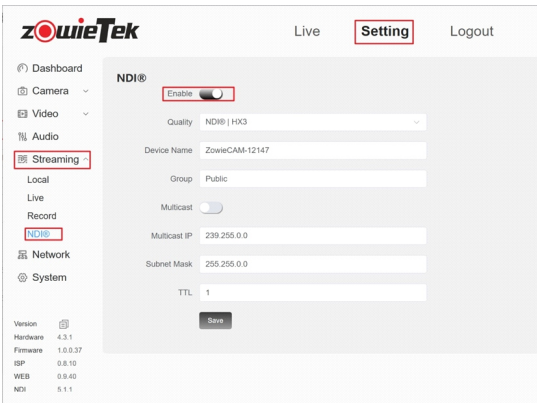
ZowieCam has two working modes, normal encoding mode, and NDI encoding mode. It supports up to 4k30 output and encoding; supports encoding RTSP, RTMP(S), SRT and NDI (HX/HX2/HX3) .

If you want to switch the code stream to NDI encoding mode, please login the web control interface and click

**"Setting->System->NDI"** to make sure NDI is activated.



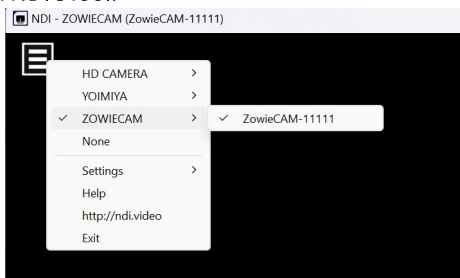
After logging into the web control interface, click "**Setting->Streaming->NDI**" to open the NDI button and reboot to enable NDI encoding mode.



2) NDI Connection  
Compatible software:



After ZowieCam is switched to NDI encoding mode, it supports most of NDI software to discover ZowieCam automatically in the same LAN, for example, selecting the device you need to play directly in NDI 5Tool.



### Notes:

If your computer cannot detect all NDI settings:

A. Check if the computer can access the web-based control interface of ZowieCam.

B. Please close any relevant software such as VPN.

C. Verify whether you are using a private or public network, and check if you have allowed all NDI software to pass through in the "Allow applications to passthrough the firewall".

### Firewall & network protection

Who and what can access your networks.

#### Domain network

Firewall is on.

#### Private network (active)

Firewall is on.

#### Public network

Firewall is on.

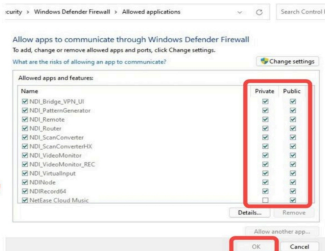
**Allow an app through firewall**

[Network and internet troubleshooter](#)

[Firewall notification settings](#)

[Advanced settings](#)

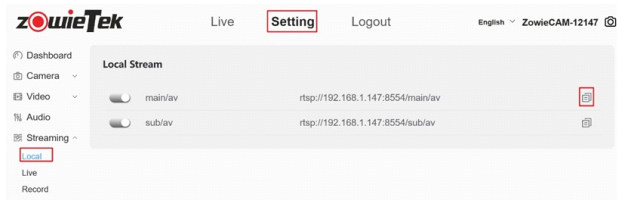
[Restore firewalls to default](#)



## 7. Local Stream

Through local streaming, users can view the consequence of encoding settings in real time on the same LAN by rtsp stream.

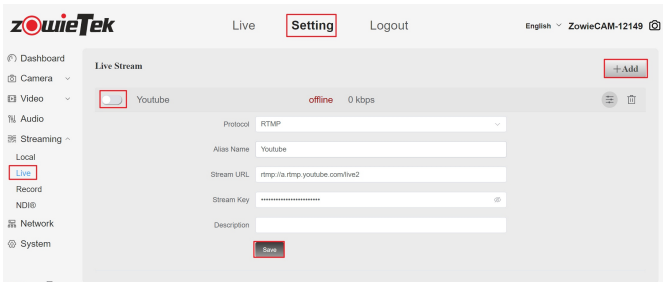
- 1) Click "**Streaming->Local**" in the web control interface.
- 2) Click the icon on the right to copy the URL of the primary or secondary stream.



## 8. Internet Stream

Add tasks in this interface to streaming to public CDN (Content Delivery Network) .

- 1) Click "**Streaming->Live**" on the web page.
- 2) Click "+Add" to create a new network streaming task.
- 3) Select the same protocol as the streaming address and enter the streaming address and key, if you don't have the streaming key, you can skip it.
- 4) Enter the name of the network flow task and click "**Save**", the name will be displayed in the preview interface for operation.
- 5) Turn on "**Test**" to start pushing stream.



## 9. Restore Factory Settings and Reboot

1) Restart ZowieCam

Click "**System->Default->Restart**" in the web control interface.

2) Restore ZowieCam to factory settings:

(1) Click "**System->Default->Restore factory default settings**" in the web control interface.

(2) Click the panel button MENU to bring up the OSD and select Restore Factory Settings.

## 10. Firmware Upgrading

1) Click "**System->Default->Restart**" in the web control interface.

2) Click to select the file to upload the correct firmware.

3) Click to upgrade.

### Notes:

After clicking Upgrade, ZowieCam will be automatically upgraded and reboot. This process will take a few minutes. During this period, please keep the network of ZowieCam smooth and stable power supply, otherwise it will lead to upgrade failure.

## 11.Warranty

We offer your 4K POV Camera

**one-year** hardware warranty  
Lifetime software maintenance

For answers to **FAQs** and information, please visit:

 <https://www.zowietek.com/knowledge-base>

 <https://www.zowietek.com/>

Or contact us:

 [support@zowietek.com](mailto:support@zowietek.com)

 +86-21-50277371, 50277372

A professional  
video camera,  
streaming, and recording  
solution provider  
Since 2004

**Zowietek Electronics, Ltd.**

2218 Hunan Road, West Wing 1701  
Pudong, Shanghai, China  
PN:30631-XYZ

 **zowieTek** is a registered trademark of Zowietek Electronics , Ltd.