

Connect MediDVR to a network via a standard Ethernet cable or connect to WIFI, users can record videos “across the network” into a shared directory on a network drive. This section describes how to set up the necessary network connections.

Getting Started

To configure network, follow these basic steps:

Step1: Use an Ethernet cable or scan WIFI to connect MediDVR to your network (LAN connection is on the back panel);

※ Enter Menu->Network->Wi-Fi to scan and connect WIFI.

Step2: Through Menu->Network to check the network setting and ensure that network connection is successful. Step3: Plug a USB keyboard into one of the USB connectors (No keyboard required if network is configured via soft keyboard);

Step4: Get IP address of NFS server (this article uses 192.168.1.249 as an example).

Notice: Default share directory:

MediDVR2 Default

account : MediDVR2

Default password:

MediDVR123.

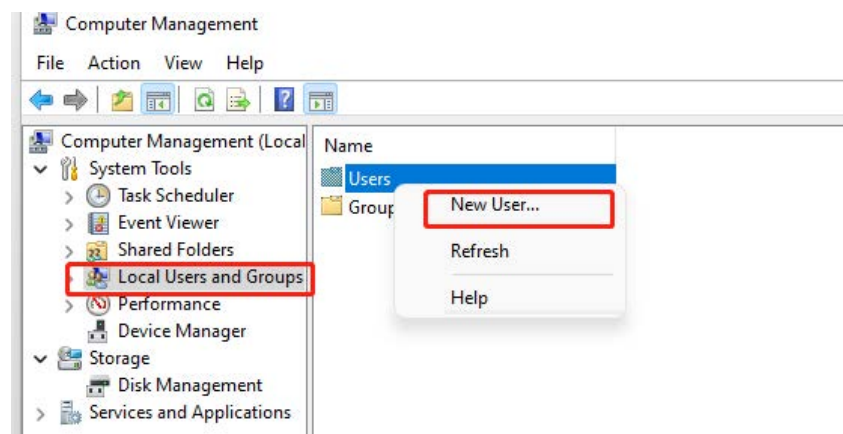
Supported Server Editions: Windows 10 Home/
Professional. Windows 7
Home/ Professional, etc. NAS
server such as Synology, etc.

Begin Configuration

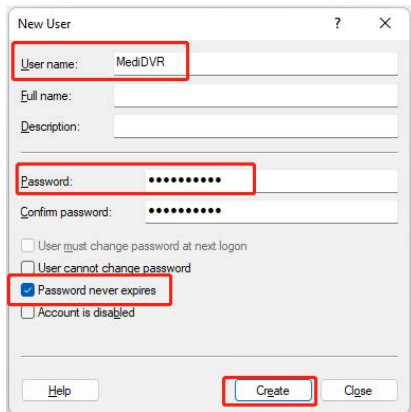
1. Configure SMB server

① Create a User Account

Right click This PC (Computer)—Computer Management- Local Users and Groups-Users-right click Users-New User.



Type in a username (ex: MediDVR2) for the user account and a password (ex: MediDVR123), fill out any other details if you like, but do not forget check the option that password never expires. Click on Create when finished.

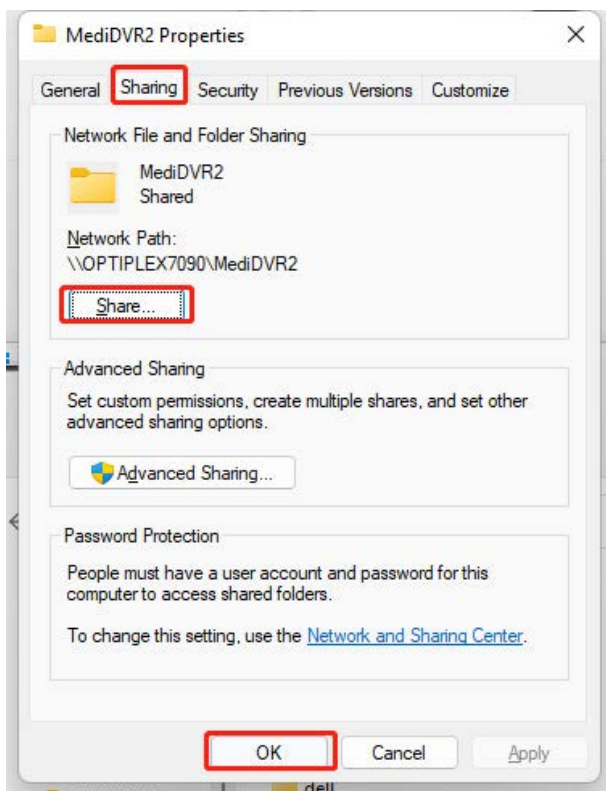


② Create a Share Directory on PC

Step1: Create a new folder (ex: take MediDVR2 as folder name) on a drive you want (ex: drive D);

Step2: Locate the shared folder-right click Properties-Sharing-Share-Click on the inverted triangle in the input field-choose

Everyone- Add-Read/Write-Click share.



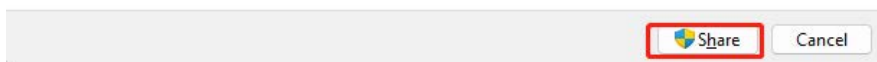
← Network access

Choose people to share with

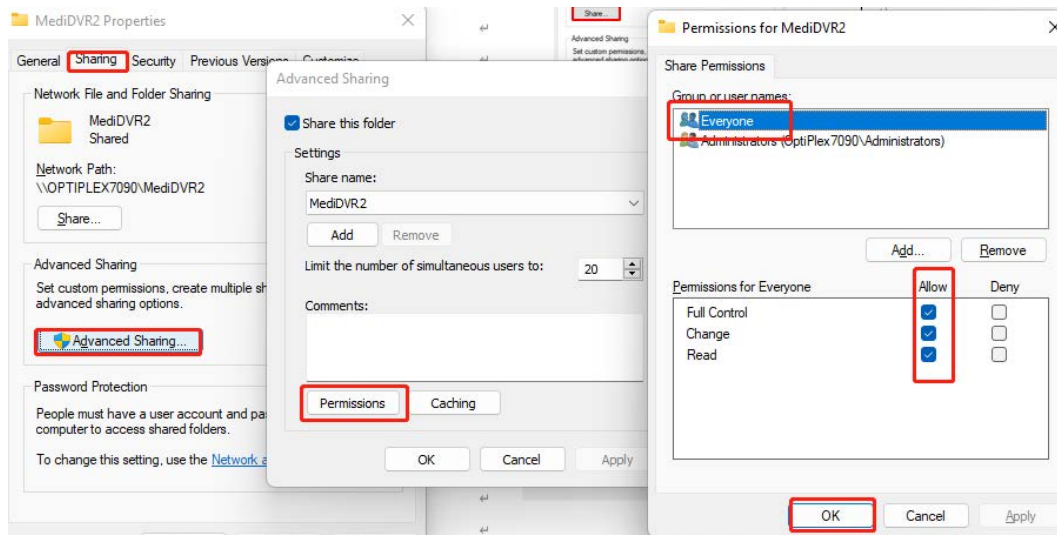
Type a name and then click Add, or click the arrow to find someone.



[I'm having trouble sharing](#)



Step3: Locate the shared folder-right click Properties-Sharing-Advanced Sharing-Permissions- Tick to allow.



③ Test Share Directory

Step1: Choose another computer that in the same network segment.

Step2: Use shortcut key WIN+R to display Run window.

Step3: Input: \\IP\MediDVR2. If users can open the folder successfully, then go on. If not, please ask network administrator for help or see NFS FAQ.

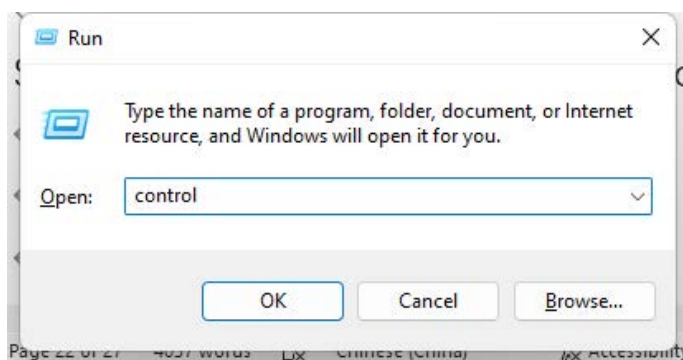
※ The IP is IP address of NFS server. For this article, the input is \\192.168.1.249\MediDVR2.



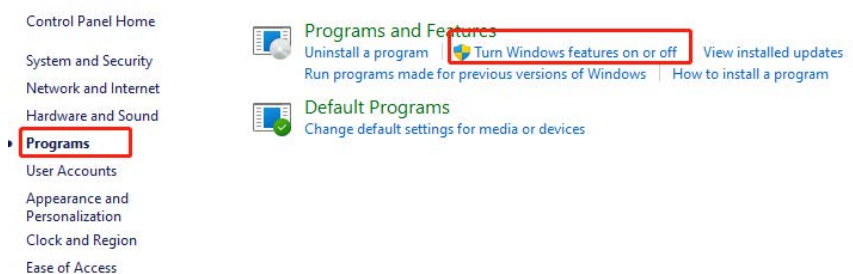
④ Install Windows Service

※ This section should be pay attention for win10 user, but for win7 user, it can be skipped.

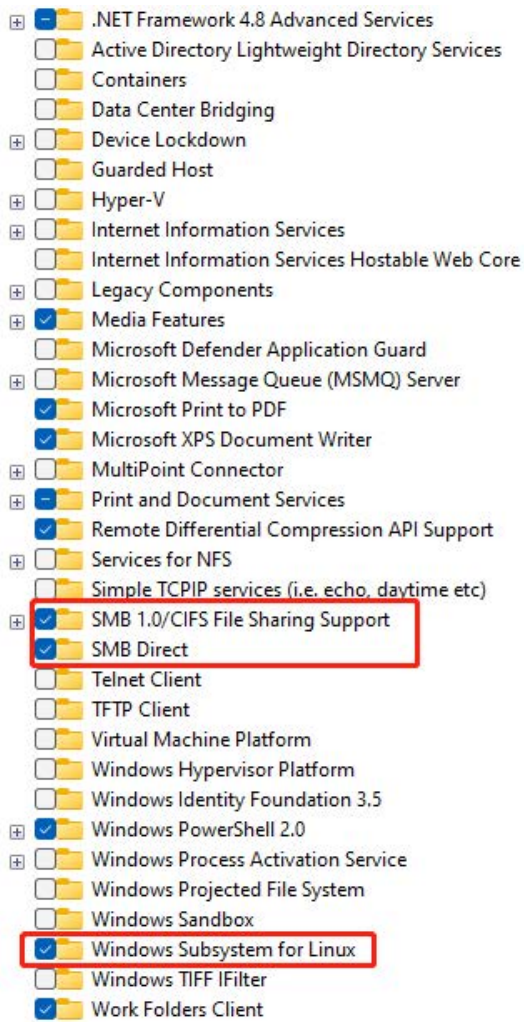
Step1: Use shortcut key WIN+R to display Run window. Enter 'control' to call out the control panel.



Step2: Control Panel-Programs and features-Turn Windows features on or off;



Step3: Check the option as shown below :



⑤ Configure NAS

NAS don't need any special setting, as long as NFS account of MediDVR has Read/Write permission to shared folder.

2. Configure MediDVR

Step1: Press the Menu button or touch the Menu icon on the LCD screen to display the Main Menu, then enter Record submenu, select Storage tab and choose NAS as storage;



NAS Set	
ServerIP	192.168.1.249
Share Dir	MediDVR2
Account	MediDVR2
Password	MediDVR123

Save Exit

Notice:

※ After the setting is completed, select Save and exit the NAS setting interface, return to the storage interface, and select Save again. When you hear a beep, it means that MediDVR has successfully recognized the NAS.

TEST NAS

Connect to video source and choose NAS as storage, "NAS" will be shown on the top-right of LCD window and Record LED on the front panel will become green. If shared directory is empty, users need to input patient information. If recording video on the share directory can play normally, you have successfully completed network connections setting.



NFS FAQ



1. MediDVR cannot connect to NFS server/NAS.
 - Confirm Server IP, Account and Passwd are correct.
 - Confirm shared directory of NFS server is identical to share Dir of MediDVR.
 - Confirm NFS is connected through whether there is the words “NFS” being shown on the top- right of main menu.
 - Ping IP of NFS server using another computer that in the same network segment. If there is no data packet dropout, then check out whether you have set the option that enable folder sharing.
 - If NFS server is in windows10, check out whether you have installed Windows SMB and Linux installed.
 - Confirm directory has Read/Write permission.
 - Folder name on MediDVR must not contain space or backslash characters.
 - Check network firewall and confirm that 111, 2049, 4046 TCP/UDP port is open.
 - NFS Server/NAS must be connected via switch.

2. If recording video is not smooth, indicate that the network is not ideal, you can lower network broadband requirements or video recording quality.

3. When the MediDVR is restarted or disconnected from the network, the NAS will be disconnected. To reconnect, you need to enter the storage interface again and select the NAS. When you hear a beep sound, the NAS connection is successful.

4. Make sure all settings are correct but still can't connect to the NAS.

Use the LAN to connect to the Internet and enter the storage interface again and select the NAS. After successfully connecting to the NAS, you can unplug the network cable and use the NAS normally.