

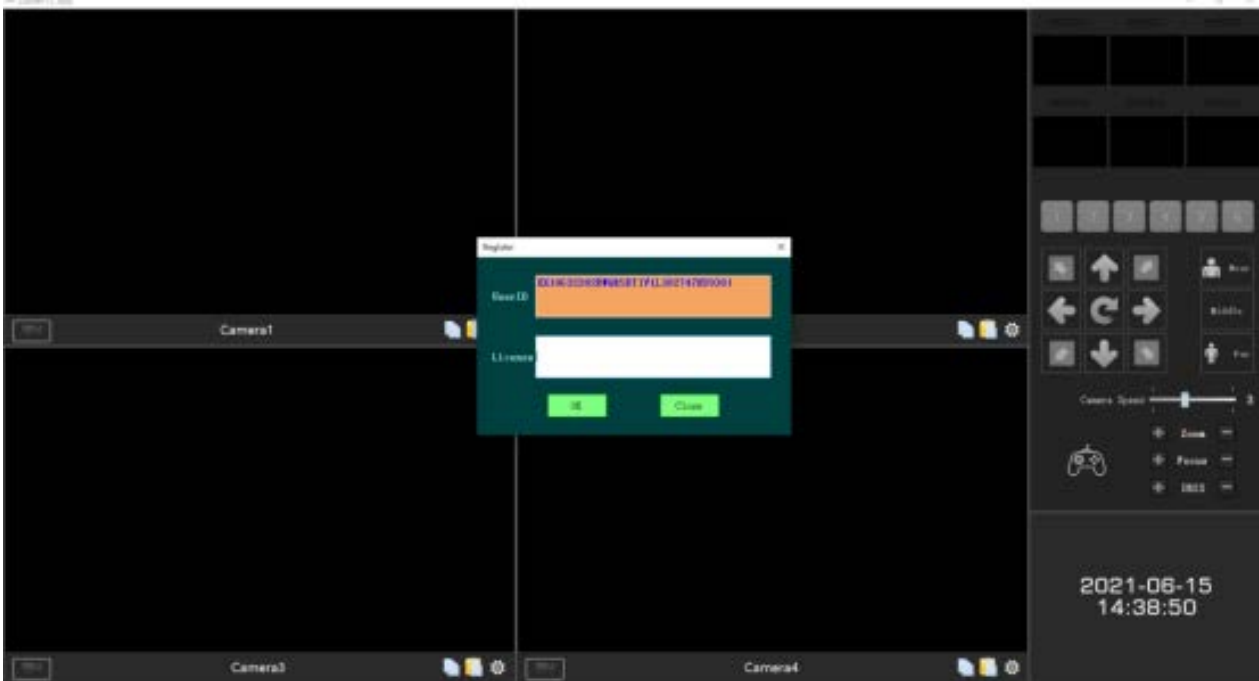
# How to control PTZ camera by ZowiePTZ


Step 1: Download Downloads - Zowietek Electronics, Ltd. and install it.

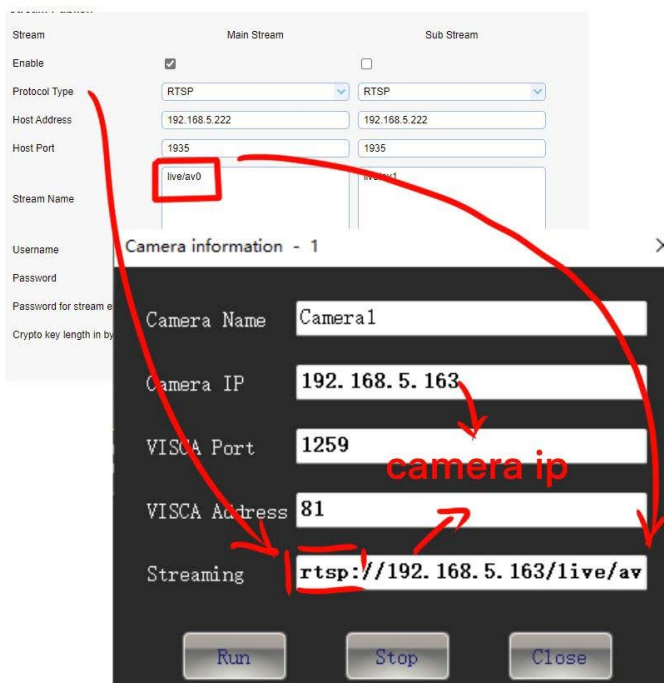
Step 2: Double click the camera control program



Step 3: Software registration, enter the license, click “OK” to complete the activation (please send the user ID to Amazon message center to get the license.)



Step 4: Click  and type the camera IP and Streaming



## Interface function introduction

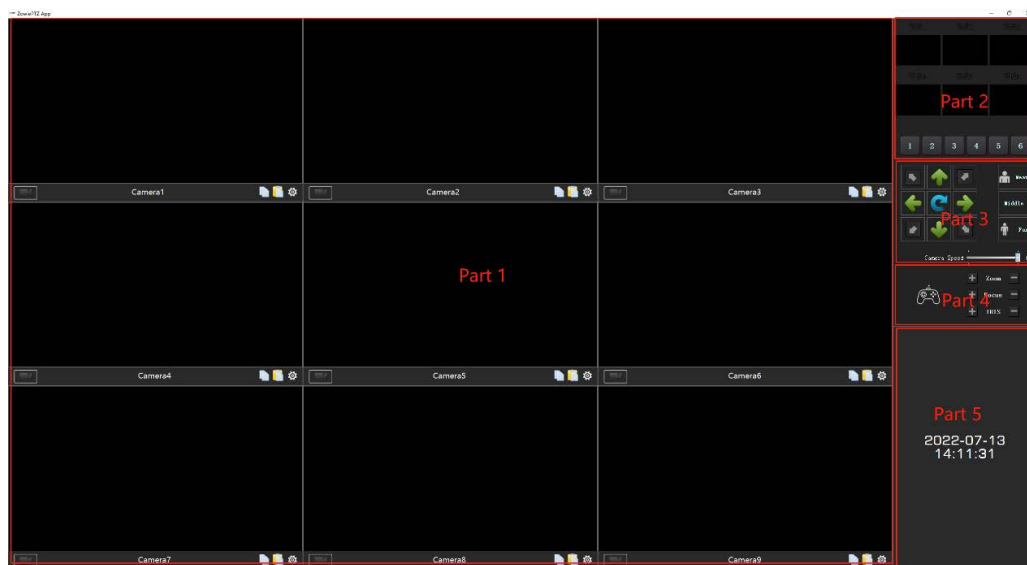
Part 1: Signal source display area

Part 2: Preset position area (Please long press to set preset key)

Part 3: PTZ control area

Part 4: Camera control area

Part 5: System time display area



## Signal source channel introduction

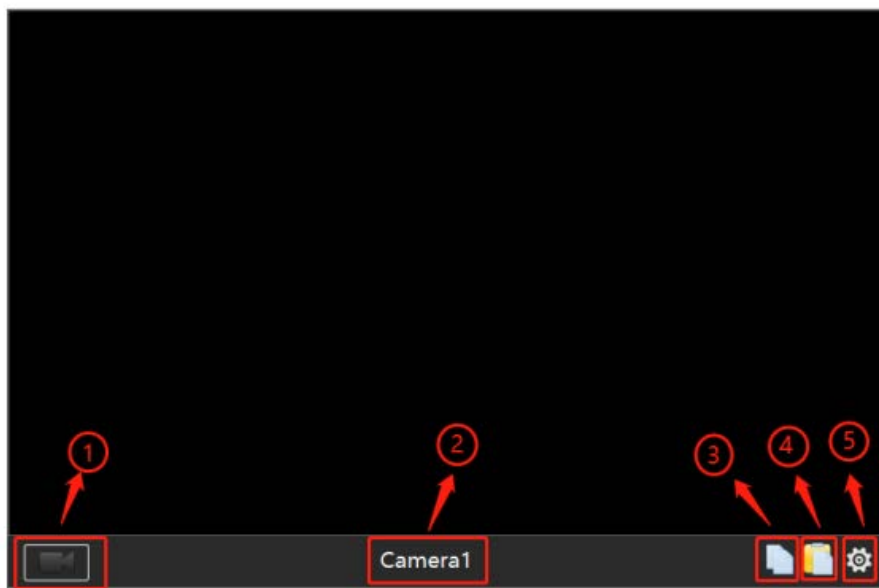
1. The record button; it can record the video.

2. Camera name

3. Copy (copy the current camera's setting)

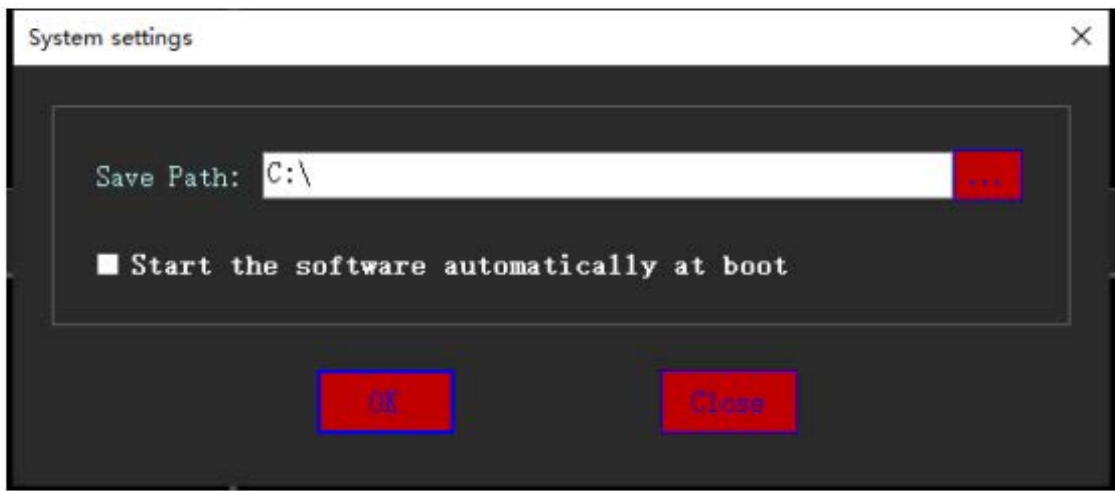
4. Paste (paste the camera's setting)

5. Settings (camera settings)



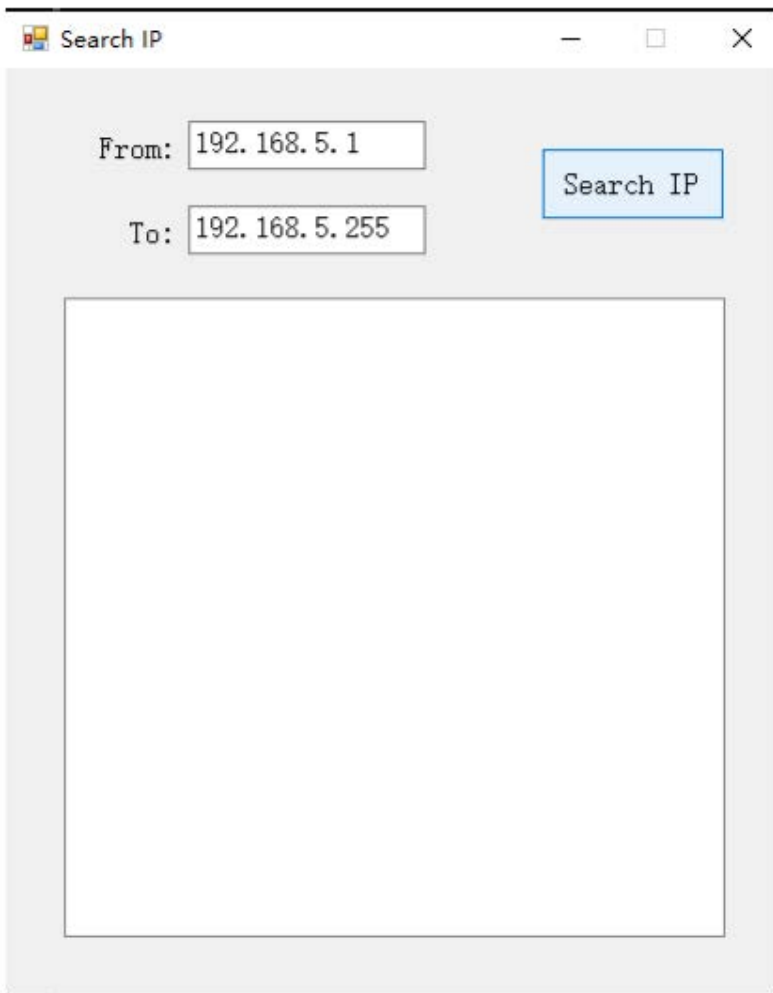
## Recording file storage directory setting

Right-click and select “System Settings”, click the “...” button to set the storage path, and click “OK” to storage.



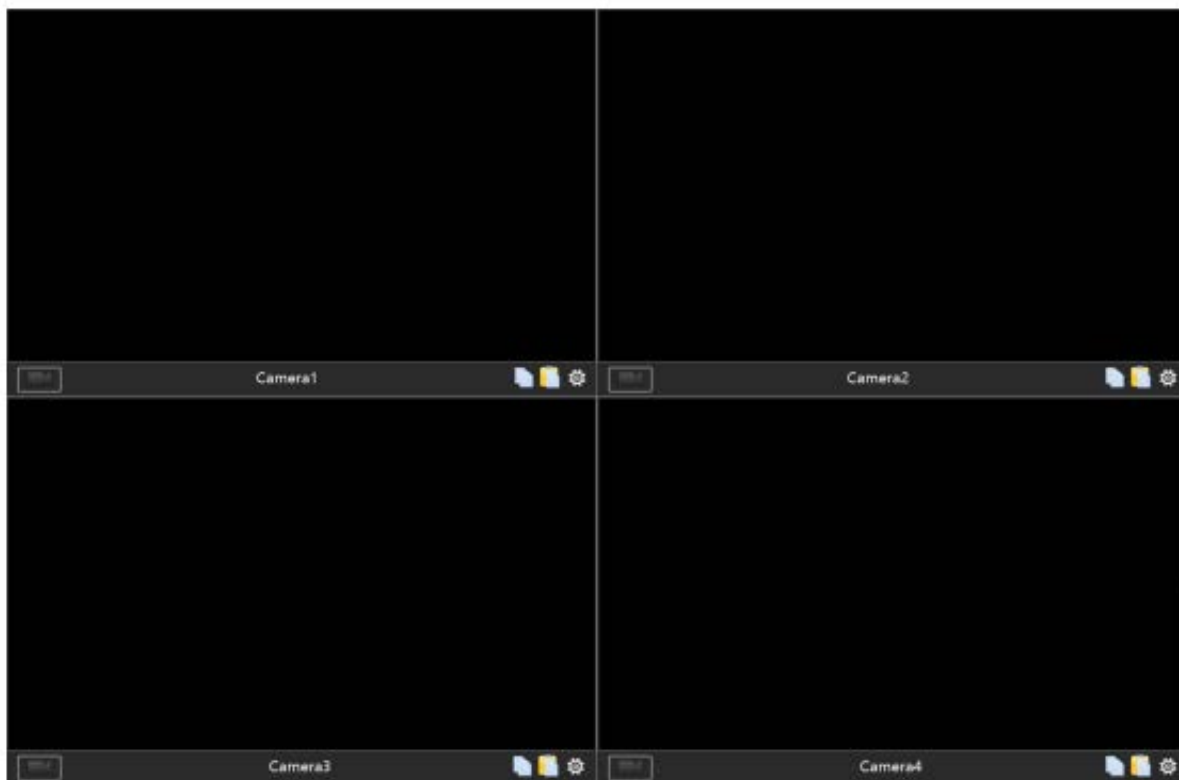
Search IP

Right-click and select “Search IP” , click the “Search IP” to check the IP



Switch the 9 Channels / 4 Channels

Right-click and select “Switch to 4 Channels” , and restart the App.



#### Preset Position

1. After confirming the preset position by the PTZ direction keys, long press the “1” button to save the preset position
2. You can double click to change the preset position name



## PTZ Control Area

PTZ Control: adjust the direction of PTZ camera

Zoom Shift: one button shifts Near/Middle/Far

Camera speed: PTZ speed adjust from 1 to 6

Zoom: Adjust the zoom of camera

Focus: Adjust the focus of camera

Aperture: Adjust the aperture of camera

